

## How To Clean Latex Paint from Paint Brushes

### MATERIALS AND TOOLS NEEDED

- Old Newspapers
- Any mild bar soap or dishwashing detergent
- 1 bucket or warm soapy water
- 1 bucket for warm clean water
- Paint brush comb (recommended)
- Rags

\*This recipe is for Latex Paint removal only.

\*Clean paint brushes immediately after use.

Use the rim of a can and then work some of the paint onto newspaper before cleaning in warm soapy water.



Dip the paint brush into the mixture, working the soap through the brush bristles.

Work the paint free of the bristles with your hands and a brush comb.

Follow as above but with a clear water rinse.



Repeat the process if necessary.

Before storing your paint brushes, remove all of the water from their bristles.

Many do so by shaking the brush (outdoors) at the top of a bucket and then blotting the brush dry with a clean rag or newspaper.



The Lorain County PIPE  
C/o Lorain County Storm Water District  
226 Middle Ave.  
5th Floor  
Elyria, Ohio 44035  
Phone (440) 328-2364  
Fax (440) 328-2349  
**Stormwater Hotline (440)328-2364**  
[www.stormwater.loraincounty.us](http://www.stormwater.loraincounty.us)

Make Your Home

**The  
SOLUTION  
TO STORMWATER  
POLLUTION**



***A Homeowners  
Guide to  
Healthy Habits for  
Clean Water***



Public Involvement Public Education

Educating the public on our impact on Lake Erie.

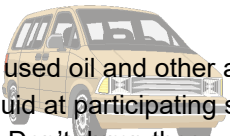
# Healthy Household Habits for Clean Water:

**A**s Storm Water flows over driveways, lawns and sidewalks, it picks up debris, chemicals, dirt and other pollutants. Storm water can flow into a storm sewer system or directly into a stream, wetland or lake.

Anything that enters a storm sewer is discharged, untreated into the water bodies we use for fishing, swimming and drinking. By practicing healthy household habits, homeowners can keep pollutants out of storm water.

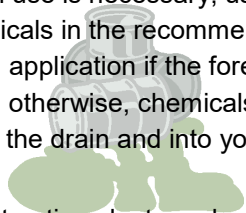
## Vehicle and Garage:

- Use a commercial car wash or wash your car on a lawn or other unpaved surface to minimize the amount of dirt and soapy water flowing into the storm drain and eventually into your local stream or lake.
- Make repairs as soon as possible. Clean up spilled fluids with an absorbent material like kitty litter or sand. **Don't** rinse the spills into a storm drain. Properly dispose of the absorbent material.
- Recycle used oil and other automotive fluid at participating service stations. Don't dump these chemicals down the storm drain or dispose of them in your trash.



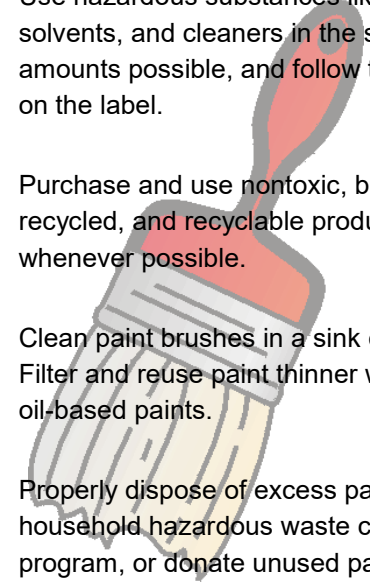
## Lawn and Garden:

- Use pesticides and fertilizers sparingly. When use is necessary, use these chemicals in the recommended amounts. Avoid application if the forecast calls for rain, otherwise, chemicals will be washed down the drain and into your local streams.
- Select native plants and grasses that are drought and pest resistant. Native plants require less water, fertilizer, and pesticides.
- Sweep up yard debris, rather than hosing down areas. Compost or recycle yard waste when possible.
- Don't over water your lawn. Water during the cool times of the day. Don't let water run off into the storm drains.
- Cover piles of dirt and mulch being used in landscaping projects to prevent these pollutants from blowing or washing off your yard and into local water bodies. Vegetate bare spots in your yard to prevent soil erosion.
- Reduce the amount of paved area and increase the amount of vegetated area in your yard. Use native plants in your landscaping to reduce the need for watering during dry periods. Consider directing downspouts away from paved surfaces onto lawns and other measures to increase infiltration and reduce polluted runoff.



## Home Repair and Improvements:

- Before beginning an outdoor project, locate the nearest storm drains and protect them from debris and other material.
- Sweep up and properly dispose of construction debris such as concrete and mortar.
- Use hazardous substances like paints, solvents, and cleaners in the smallest amounts possible, and follow the directions on the label.
- Purchase and use nontoxic, biodegradable, recycled, and recyclable products whenever possible.
- Clean paint brushes in a sink or bucket. Filter and reuse paint thinner when using oil-based paints.
- Properly dispose of excess paints through a household hazardous waste collection program, or donate unused paint to local organizations.



## Sanitary System Important Message

Disposable is not Flushable but is Clog-able! Convenience wipes such as baby, hygienic, cleaning and disinfectant, as well as toilet bowl scrubbers and even paper towels might be labeled as "Disposable or Flushable" but these items should not go down the Sanitary Sewer.